

## Emerald Ash Borer in Brooklyn Park

### *Stop the Spread of EAB!*

As you have likely read, seen or heard through media reports, there is a confirmed finding of emerald ash borer (EAB) in Minnesota. So far there are no findings of the pest in the City of Brooklyn Park.

A commercial tree care company made the initial detection of EAB larvae and a portion of an EAB adult in three different ash trees on Wednesday, May 13, 2009 in St. Paul (East of Highway 280 and North of Interstate 94). The specimens were provided to the Minnesota Department of Agriculture on Thursday morning and then sent to experts in Michigan for official confirmation.

There are additional ash trees in the surrounding area that displayed symptoms representative of EAB, including d-shaped exit holes. Unfortunately, this most likely is not the only infested area within the metro area, as there were trees within this site that appeared to have been infested for many years.

Minnesota Turf and Grounds Foundation urges everyone to be on the lookout for infested trees and to help educate both peers and the general public about the EAB. What do they look like and what are the signs and symptoms of a tree that has an infestation?

Here are a few things to look for:

- Symptoms of early infestations may be difficult to diagnose
- As infestation progresses, small vertical splits in the bark can be seen on twigs or trunk
- Typically the top 1/3 of crown dies first and works its way down the tree
- Trees appear to lose about 30%-50% of their canopy after two years of infestation.
- Trees may die after two to four years or less (small trees)
- Be on the look-out for multiple declining ash in a given area
- Sapsucker holes and flaking of outer bark near sapsucker holes can be used to detect EAB in early stages

You can find much more information by logging onto: [www.mtgf.org](http://www.mtgf.org). There you can see photographs of the detection site, read more about the signs and symptoms of EAB and read about legislative initiatives to help alleviate the problem.

If you suspect a possible EAB infestation, call the Minnesota Department of Agriculture "Arrest the Pest Hotline" at 651-201-6684. You can also send an e-mail to [Arrest.The.Pest@state.mn.us](mailto:Arrest.The.Pest@state.mn.us).

The implications of EAB will have a profound effect on our environment and tree health. We urge all Brooklyn Park residents to be vigilant in being attentive to your neighborhood greenery.

# Insects in Minnesota That May Be Confused with Emerald Ash Borer

Jeff Hahn, University of Minnesota Extension  
Val Cervenka Minnesota Dept. of Natural Resources



emerald ash borer



bronze birch borer



twolined chestnut borer



flatheaded apple tree borer



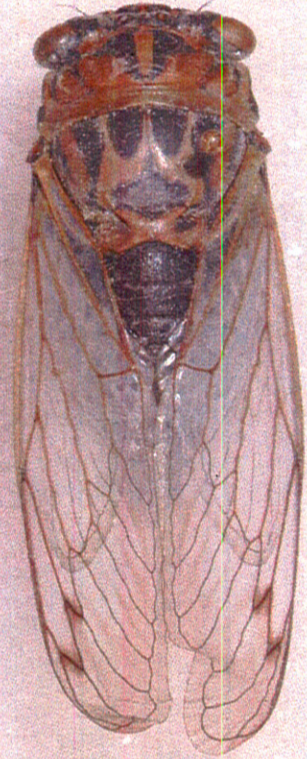
*Buprestis* metallic woodboring beetle



blister beetle



annual cicada



polydrusus weevil



halictid bee



blow fly



Japanese beetle



dogbane beetle



green stink bug



*Chlaenius* ground beetle



bark gnawing beetle



*Poecilus* ground beetle



sixspotted tiger beetle

